



Federation

vs. single Instances



MARC KILGUS | TECHNICAL ACCOUNT MANAGER | @ZAUBERCLOWN



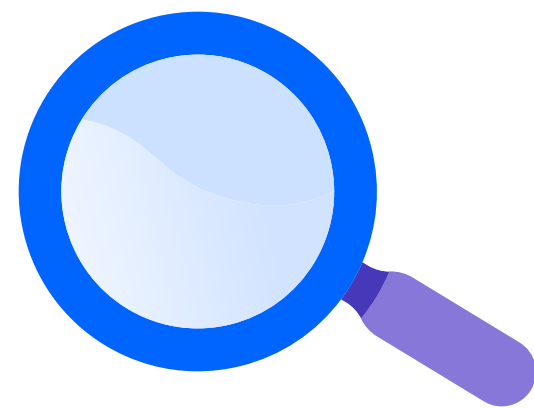
Federation?

“

**A group of instances with a central
governance / administration
but independence in internal affairs.**



Federation



Why?

What can cause a federation approach



Key Questions

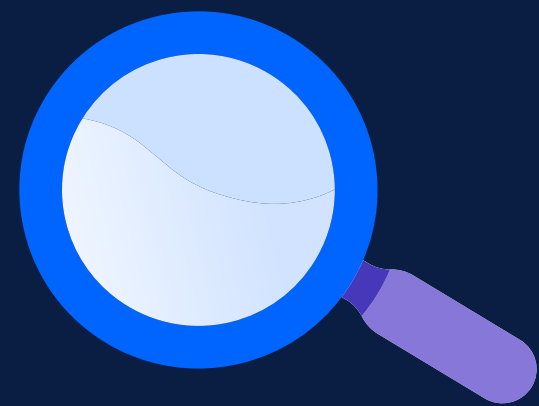
Questions to answer or at least be aware of



Impact

What is the impact on manageability and cost?

Common reasons for federation



Public / Private Jira

Different grades of complexity

Access to new features vs stability

External Customer requirement

Different Configuration or Settings

Legal requirements

Jira as an internal service

Spreading Risk / Downtime

Scaling

Questions



Are business or stakeholders working together?

Any hindering configurations?

Need of access to features?

Any performance impact caused by complexity and automation?

Any legal requirements?

How complex is your tool chain?

Does the new instance require exports from a current instance?

Impact



Manageability

Standardisation

Flexibility

Maintenance

Downtime

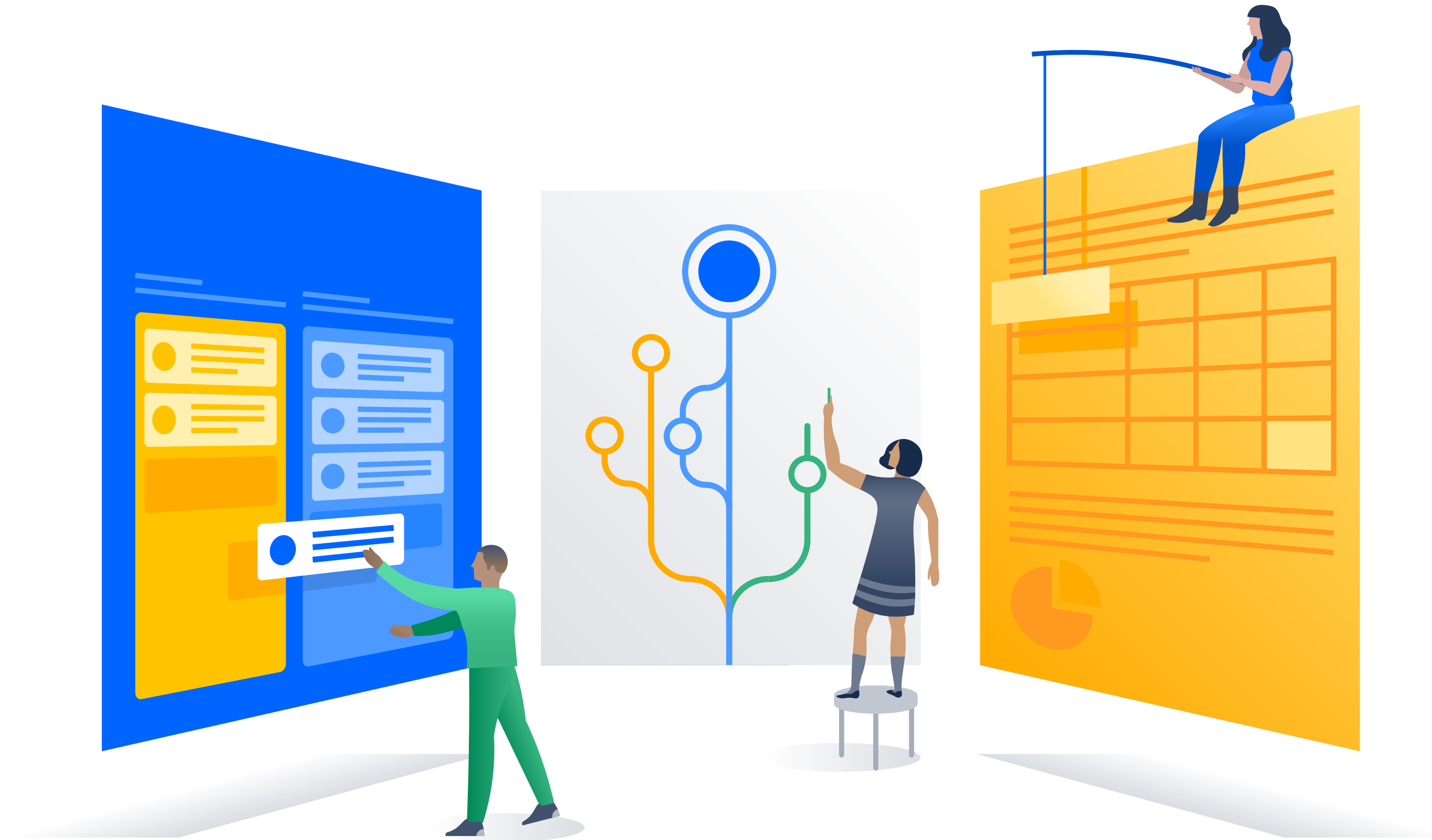
Cost

Atlassian licensing

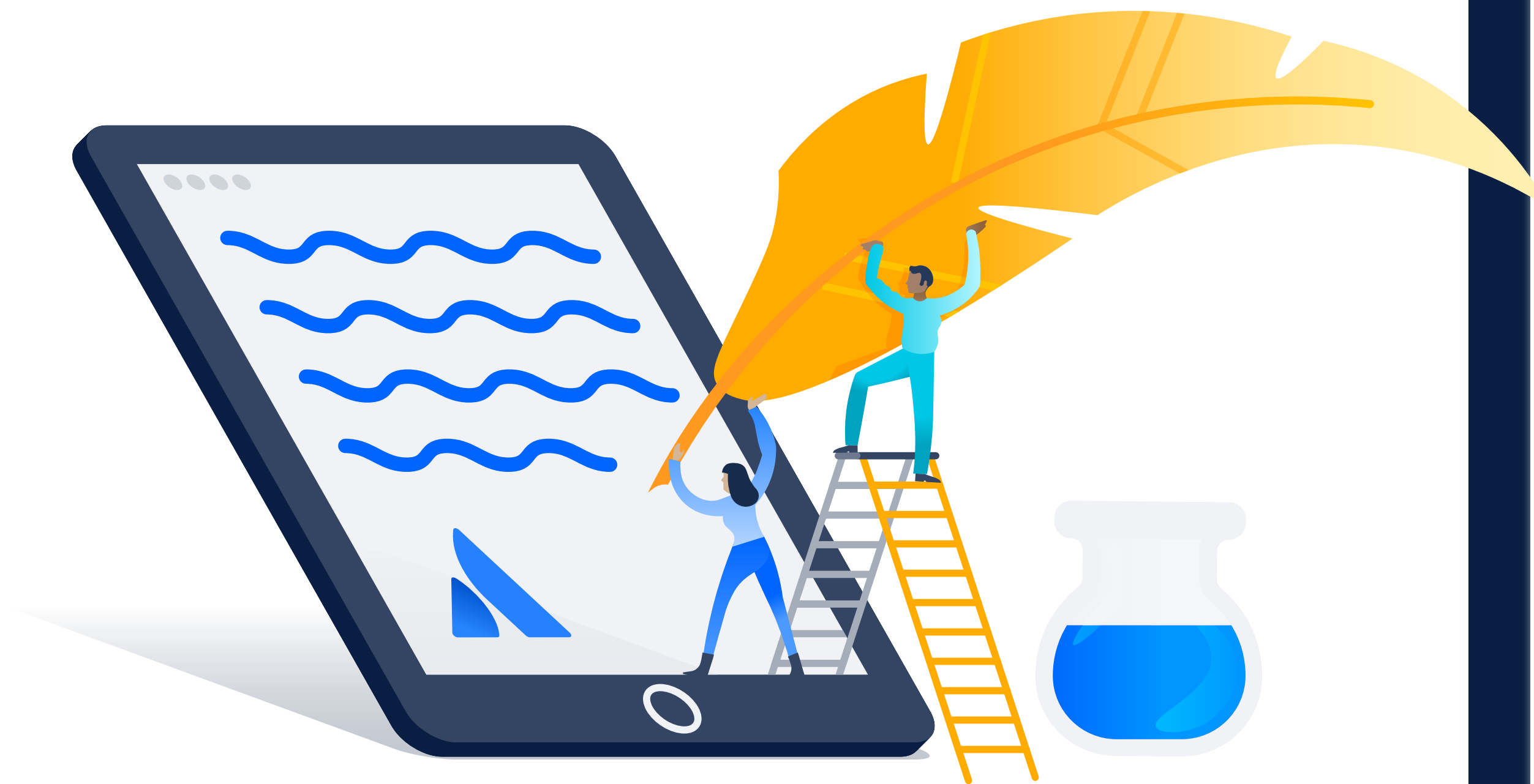
Add-on licensing

Hardware

Examples



Atlassian Examples



| Name | Purpose | Main reason to run on dedicated instance | Example Application links |
|------|---|---|---|
| JAC | Public facing issue management instance that includes new feature requirements, change requests and bugs. The best feature here is the possibility for customers to vote on issues. | Public / Private | Linking between JAC issues to related development issues in JDOG. |
| SAC | External support instance - explain links between SAC and JAC. Issues are visible to the reporter (support requester) and Atlassian only due to the classified nature of included information. | External Customer requirement, Public/Private | Linking between SAC support cases with related JAC issues (visible to the support customer) and JDOG (visible to Atlassian only). |
| JDOG | Jira teams' dogfooding server - validates your notion of having something on the cutting edge of features (for us, this is a very unique case since Jira is our product, but you get the idea). | Access to new features | Linking back to JAC and SAC respectively. |
| EACJ | Our internal Jira that runs our business process, from marketing to procurement and internal IT. | Public / Private | |

| | | | |
|------|--|------------------|--|
| EACJ | Our internal Jira that runs our business process, from marketing to procurement and internal IT. | Public / Private | |
|------|--|------------------|--|



- **No hard YES or NO**
- **Understand reasons**
- **Be aware of impact**
- **Evaluate your options**

Questions?



Thank you!



MARC KILGUS | TECHNICAL ACCOUNT MANAGER | @ZAUBERCLOWN